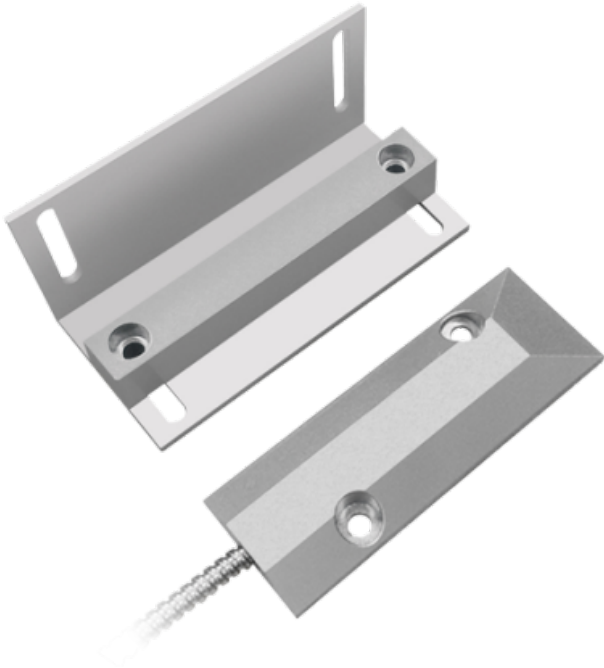




WWW.SECURITYSYSTEMS.NO

MARCA BLANCA MC-RMMC-L



Magnetic contact - Suitable for metal installation - Reed Detection Technology - 2-wire connection system - Resistance to mechanical and electrical shocks - L-Installation Bracket

- Magnetic contact for shutters and metallic doors
- Reed Technology
- High power
- Suitable for metal installation
- L-Installation Bracket
- Resistance to mechanical and electrical shocks
- 2-wire system