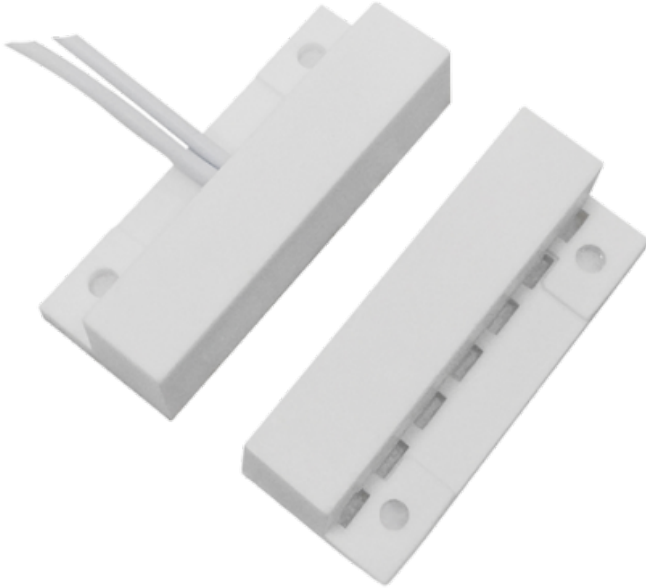




[WWW.SECURITYSYSTEMS.NO](http://WWW.SECURITYSYSTEMS.NO)

## MARCA BLANCA MC-SWPC-M1



Magnetic contact - Suitable for installation in wood - Reed Detection Technology - Connection system by 2 wires - Resistance to mechanical and electrical shocks - Reduced size

- Magnetic surface detector
- Reed Technology
- Suitable for installation in wood
- Resistance to mechanical and electrical shocks
- 2-wire system