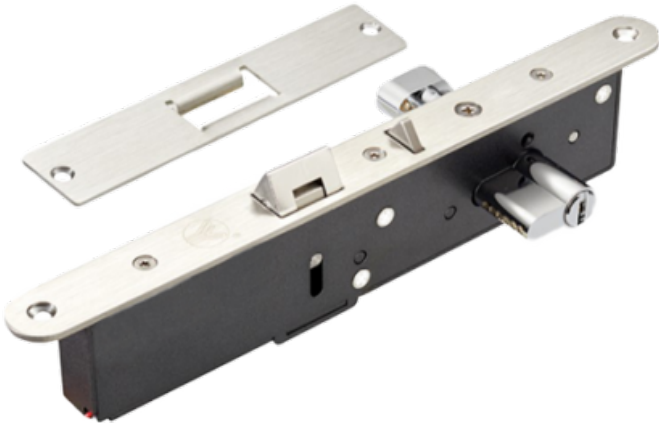




[WWW.SECURITYSYSTEMS.NO](http://WWW.SECURITYSYSTEMS.NO)

## MARCA BLANCA YML-650B



Electromechanical safety lock - Fail Secure and Fail Safe opening mode - Holding force 500 kg | Door sensor - Bidirectional opening - Stainless steel SUS304 - European cylinder included with keys

- Electromechanical security lock with slide locking device
- European cylinder with keys included
- NO (Fail Secure) and NC (Fail Safe) operation
- Door sensor
- Mounting on wood, metal and glass doors
- Suitable for narrow frame doors
- Made of stainless steel SUS304
- 12-24 VDC
- Bidirectional opening